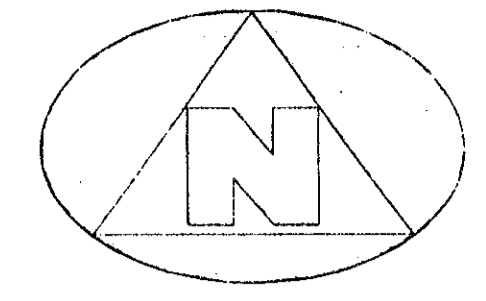


# QUAIL WOODS

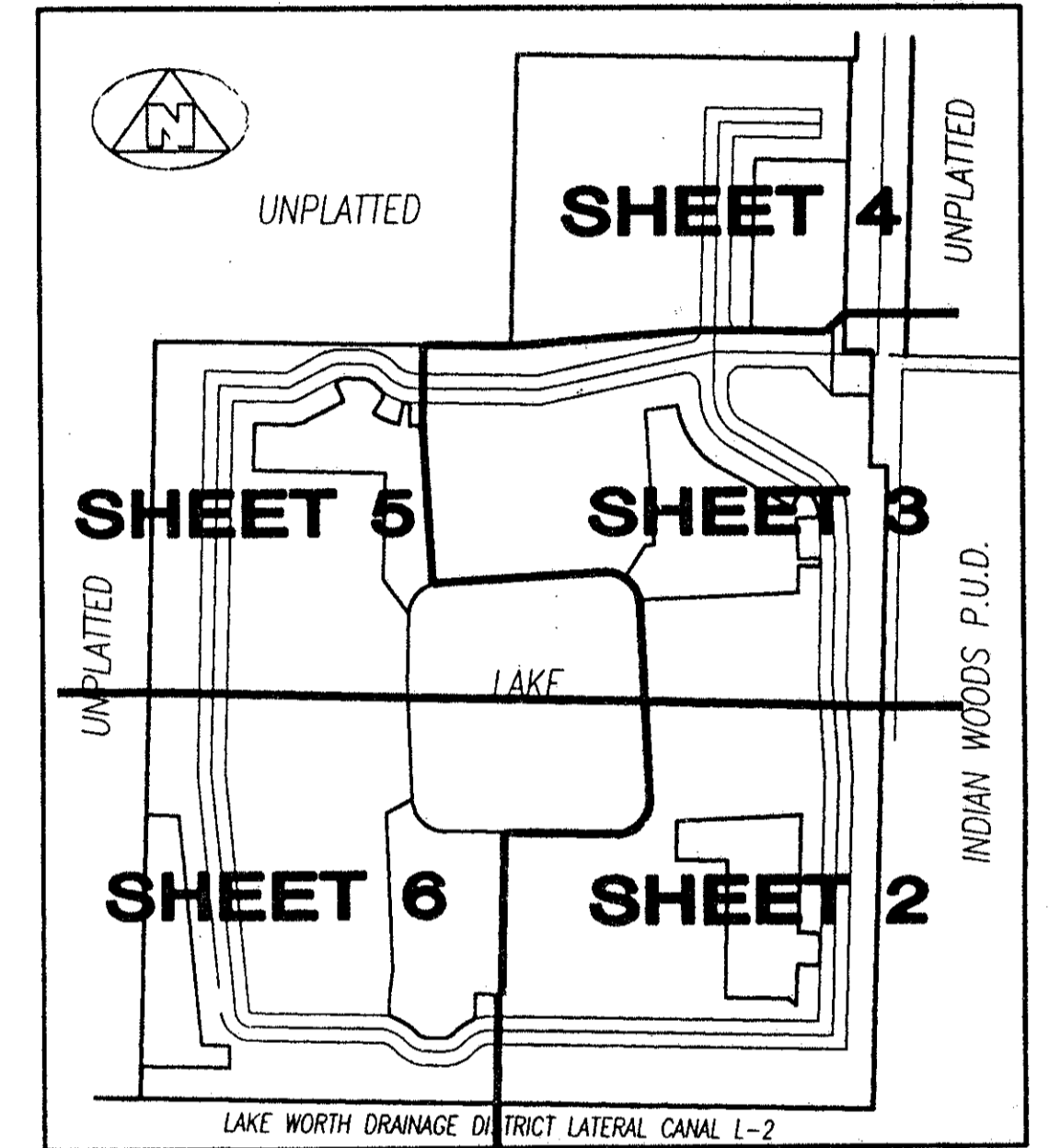
LYING IN THE NORTHEAST ONE-QUARTER OF SECTION 25, TOWNSHIP 43 SOUTH, RANGE 42 EAST, PALM BEACH COUNTY, FLORIDA



0 10' 20' 40'  
**GRAPHIC SCALE**  
(IN FEET)  
SCALE: 1" = 20'

**COORDINATE, DISTANCE, AND BEARING NOTES:**

1. THE COORDINATES SHOWN HEREON ARE STATE PLANE GRID COORDINATES ACCORDING TO THE TRANSVERSE MERCATOR PROJECTION OF THE FLORIDA EAST ZONE, N.A.D. 83, PER THE 1990 ADJUSTMENT.
  2. THE LINEAR DIMENSIONS SHOWN HEREON ARE GROUND DISTANCES IN U.S. FEET AND DECIMAL PARTS THEREOF.
  3. THE GROUND DISTANCE TO GRID DISTANCE SCALE FACTOR IS 1.0000395 (GROUND DISTANCE X SCALE FACTOR = GRID DISTANCE)
  4. THE COMMON LINE BETWEEN THIS PLAT AND THE PALM BEACH COUNTY SECTIONAL DATUM (N.A.D. 83, 1990 ADJUSTMENT) IS THE SOUTH LINE OF THE NORTHEAST ONE-QUARTER OF SECTION 25, TOWNSHIP 43 SOUTH, RANGE 42 EAST.
- COMMON LINE PLAT BEARING = N.88°50'49"W.  
COMMON LINE GRID BEARING = N.88°50'51"W.  
PLAT TO GRID BEARING COUNTERCLOCKWISE ROTATION = 00°00'02"



**KEY MAP**

PET. 85-86  
5/2/2/E

**SURVEYOR'S NOTES AND LEGEND:**

1. BEARINGS SHOWN OR STATED HEREON, ARE BASED ON, OR ARE RELATIVE TO THE ASSUMED BEARING OF NORTH 88°50'49" WEST ALONG THE SOUTH LINE, NORTHEAST ONE-QUARTER OF SECTION 25, TOWNSHIP 43 SOUTH, RANGE 42 EAST.
2. IN THOSE INSTANCES WHERE UTILITY/DRAINAGE STRUCTURES ARE CONSTRUCTED IN CONFLICT WITH THE PLATTED PERMANENT CONTROL POINTS (P.C.P.) POSITION, STRADDLERS MONUMENTED AS PERMANENT CONTROL POINTS WILL BE SET TO REFERENCE THE PLATTED P.C.P. POSITION.
3. LINES WHICH INTERSECT CURVES ARE NOT RADIAL, UNLESS OTHERWISE NOTED.
4. C/L DENOTES A CENTERLINE
5. DENOTES A SET #2424 PERMANENT REFERENCE MONUMENT (P.R.M.)
6. DENOTES A SET #2424 PERMANENT CONTROL POINT (P.C.P.)
7. DENOTES A FOUND #2424 PERMANENT REFERENCE MONUMENT (P.R.M.)
8. DENOTES A FOUND #2424 PERMANENT CONTROL POINT (P.C.P.)
9. N=860909.29 DENOTES NORTHERN STATE PLANE GRID COORDINATE
10. E=948322.77 DENOTES EASTING STATE PLANE GRID COORDINATE

This instrument was prepared by Wm. R. Van Campen, R.L.S., in and for the offices of Bench Mark Land Surveying & Mapping, Inc., 4152 West Blue Heron Boulevard, Suite 121, Riviera Beach, Florida

**BENCH MARK**  
Land Surveying and Mapping, Inc.  
4152 West Blue Heron Blvd., Suite 121, Riviera Beach, FL 33404  
Phone (407) 848-2102

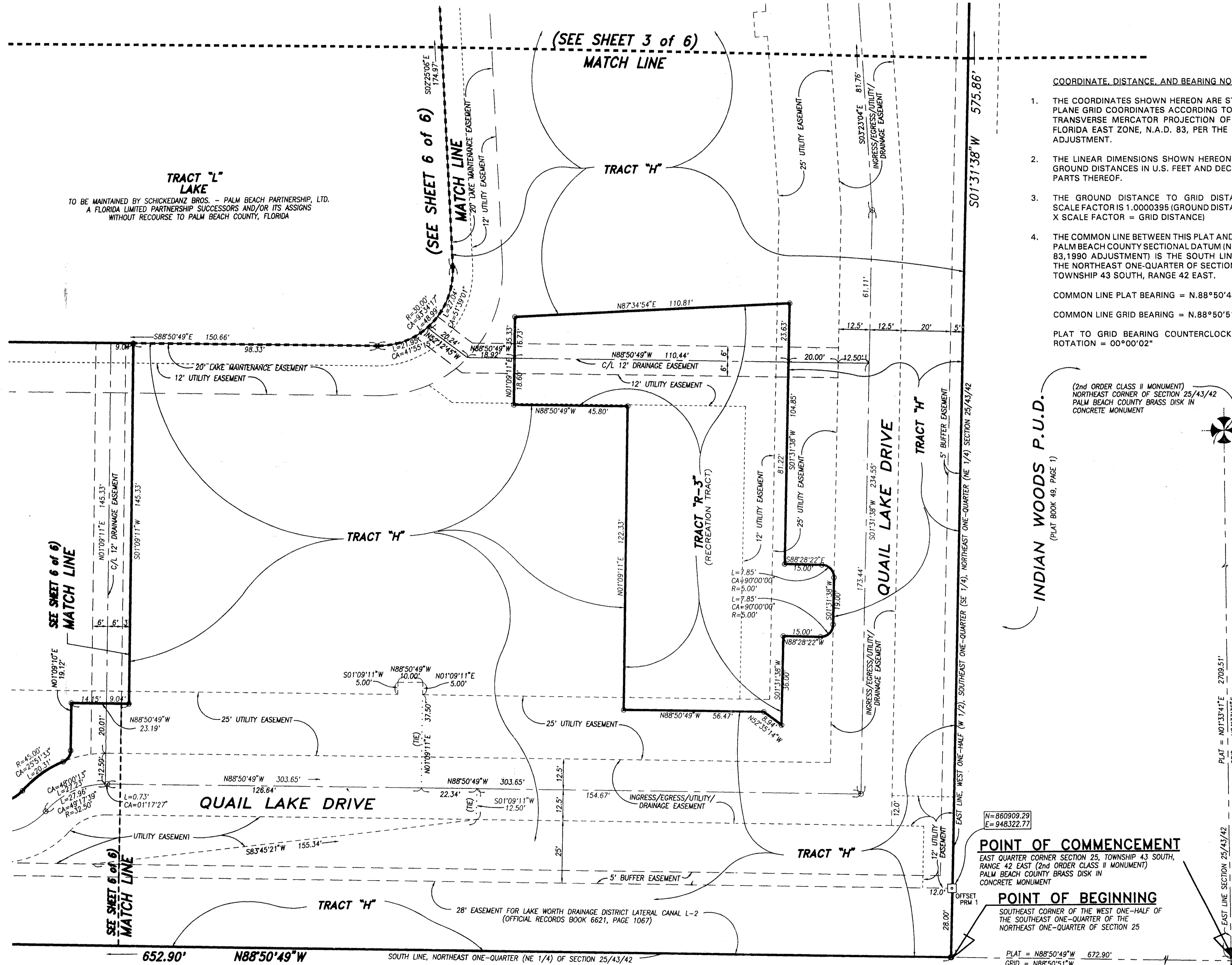
**RECORD PLAT**  
**QUAIL WOODS**  
A P.U.D.

DWN	D/M	P/B	DATE	W.O.#	P10
CKD			FILE P10-A2.dwg	SCALE 1" = 20'	SHEET 2 OF 6

INDIAN WOODS P.U.D.  
(PLAT BOOK 49, PAGE 1)

**POINT OF COMMENCEMENT**  
EAST QUARTER CORNER SECTION 25, TOWNSHIP 43 SOUTH, RANGE 42 EAST (2nd ORDER CLASS II MONUMENT)  
PALM BEACH COUNTY BRASS DISK IN CONCRETE MONUMENT  
N=860909.29  
E=948322.77

**POINT OF BEGINNING**  
SOUTHEAST CORNER OF THE WEST ONE-HALF OF THE SOUTHEAST ONE-QUARTER OF SECTION 25  
PLAT = N88°50'49"W 672.90'  
GRID = N88°50'51"W



**TRACT "L" LAKE**  
TO BE MAINTAINED BY SCHICKEDANZ BROS. - PALM BEACH PARTNERSHIP, LTD.  
A FLORIDA LIMITED PARTNERSHIP SUCCESSORS AND/OR ITS ASSIGNS  
WITHOUT RECOURSE TO PALM BEACH COUNTY, FLORIDA

SUBDIVISION # Quail Woods  
BOOK 75 FLOOD MAP # 155B  
FLOOD ZONE B ZONING RH  
QUAD # 31  
SE 85-86B  
PUD NAME  
25743143  
TAZ 211

0491-002 75/50